
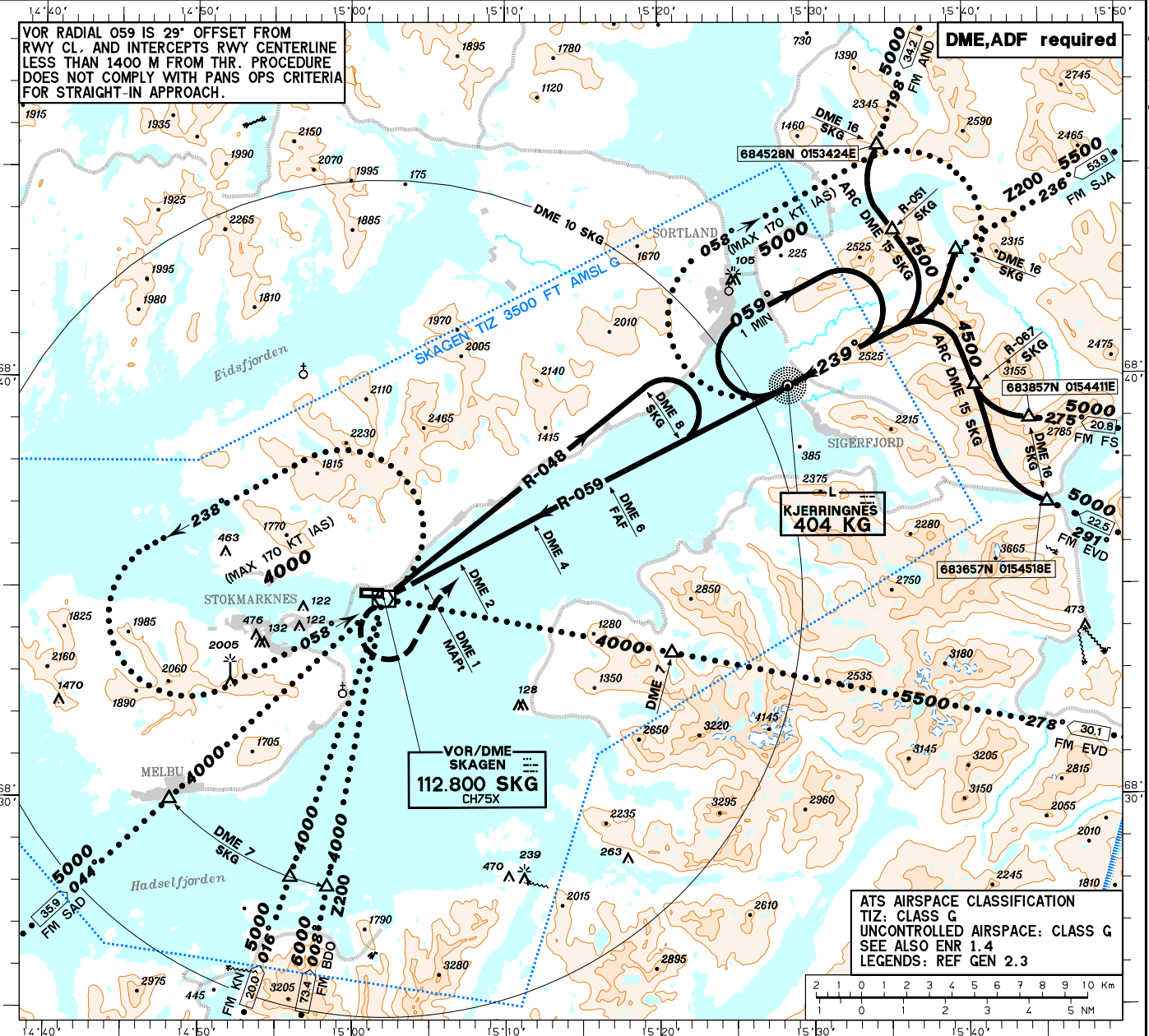


INSTRUMENT APPROACH CHART-ICAO 1:275000	MNM SECT ALT 	HGT RELATED TO THR 27 ELEV 13 FT. CIRCLING HGT RELATED TO AD ELEV 13 FT. ALTITUDE, ELEVATION AND HGT IN FT. BEARINGS ARE MAG.	AFIS 120.450	APP -	VDF 120.450	STOKMARKNES SKAGEN NORWAY VOR RWY 27
			TA 7000	VAR 3° E (2005)		



SKG

MISSED APCH PROC:
CLIMB DCT SKG. THEN TURN LEFT TO 018° TO INTERCEPT AND CLIMB ON R-059 TO KG. ENTER KG HOLDING CLIMBING TO 5000.

MISSED APCH MAX 130 KT IAS.
* MISSED APCH CLIMB GRADIENT
2.5% (150 FT/NM) 3.1% (190 FT/NM)

NM	8	7	6	5	4	3	2	1	0	1	2	3	4	5	6	7	8	9	10	11	12	13	14	15	16	NM
CAT OF ACFT	A	B	C	D	FINAL APPROACH DISTANCE FM FAF TO MAPt: 5.0 NM - TIMING NOT AUTHORIZED																					
OCA (H)	-				SPEED 60 90 120 150 180																					
STRAIGHT-IN	-				TIME 5:0 3:20 2:30 2:0																					
CIRCLING	-				RATE OF DESCENT 395 595 790 990																					
	-				DIST DME 6 5 4 3 2																					
	-				ALT (HGT) 2410(2400) 2020(2010) 1630(1620) 1250(1240) 880(870)																					

Permission: LE2 - 2346 Norwegian Mapping Authority