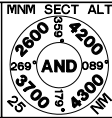


**STANDARD ARRIVAL CHART  
INSTRUMENT (STAR) - ICAO**



BRG, TR AND RDL ARE MAGNETIC  
ALT AND ELEV ARE IN FEET  
DIST IN NAUTICAL MILES

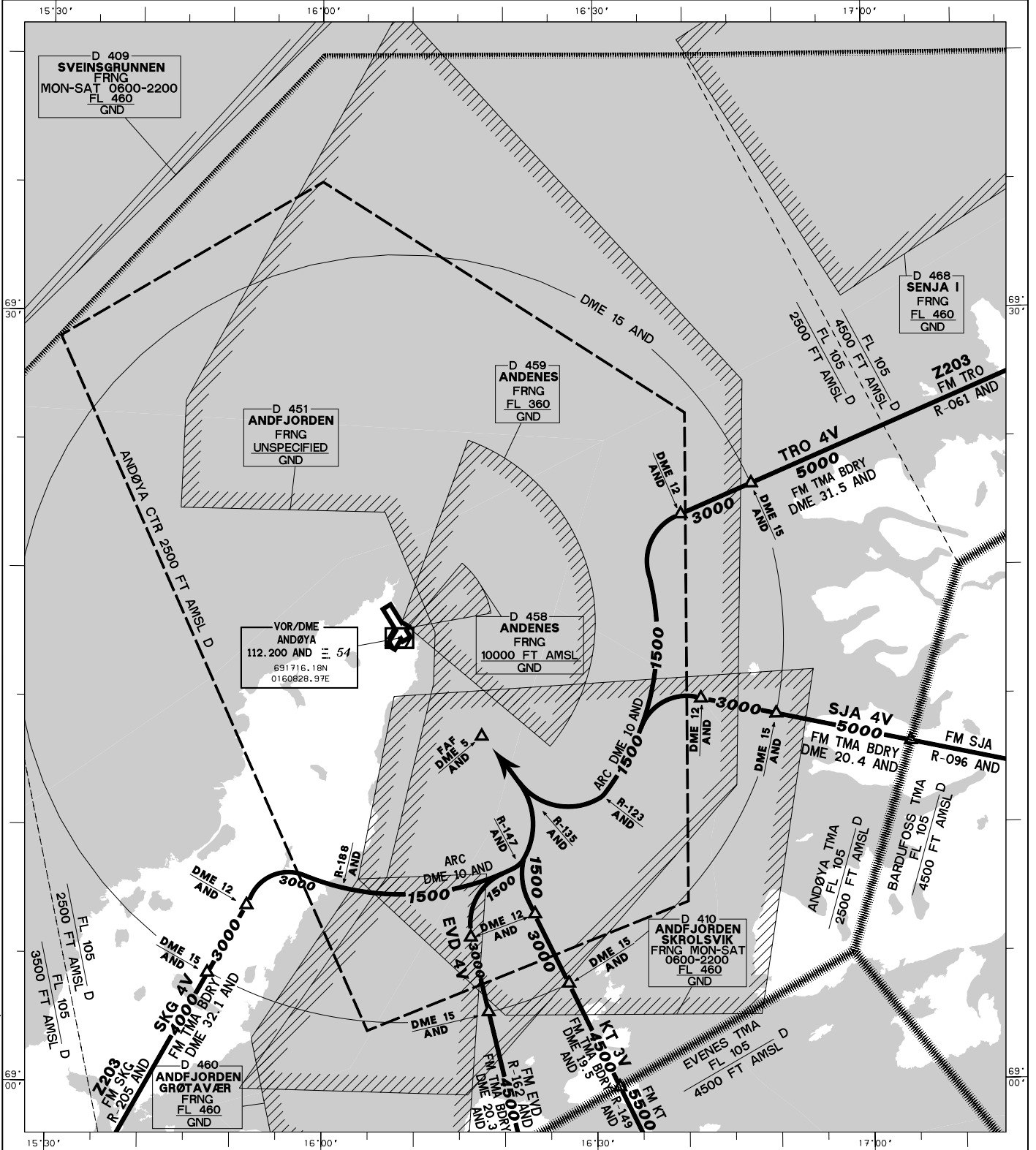
1:400 000 TA 7000

TWR 118.200 VDF 118.700  
118.700 APP  
122.100 -

**ANDENES/ANDØYA  
RWY 32**

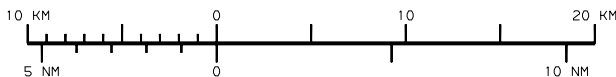
NORWAY

EVD 4V, KT 3V, SJA 4V, SKG 4V, TRO 4V



CHANGES: EN D455 CHANGED TO EN D409, EN D461 CHANGED TO EN D410.

**STAR DESCRIPTION OVERLEAF.**



ATS AIRSPACE CLASSIFICATION  
TMA, CTR: CLASS D  
UNCONTROLLED AIRSPACE: CLASS G  
SEE ALSO ENR 1.4  
LEGENDS: REF GEN 2.3

VAR 5°E - 2005

**STANDARD ARRIVAL ROUTES - INSTRUMENT  
(STAR)****ANDØYA  
RWY 32****SPEED RESTRICTIONS:** MAX IAS 250 KTS BLW FL 100.**DESCEND:** As cleared by ATC.**NOTE:** Altitudes shown on this chart are minimum obstacle clearance altitudes only.  
PIC must strictly follow instructions from ATC concerning altitudes and flight levels.

DESIGNATOR	ROUTE
<b>EVENES FOUR VICTOR ARRIVAL (EVD 4V)</b>	From EVD proceed on R-342 EVD/R-162 AND. When passing DME 12 AND turn right to intercept and proceed on ARC DME 10 AND. When passing R-147 AND turn left to intercept and follow R-135 AND to FAF (DME 5 AND).
<b>KATNES THREE VICTOR ARRIVAL (KT 3V)</b>	From KT proceed on QDR 330° KT/R-149 AND. When passing DME 12 AND turn right to intercept and follow R-135 AND to FAF (DME 5 AND).
<b>SENJA FOUR VICTOR ARRIVAL (SJA 4V)</b>	From SJA proceed on QDR 278° SJA/R-096 AND. When passing DME 12 AND turn left to intercept and proceed on ARC DME 10 AND. When passing R-123 AND turn right to intercept and follow R-135 AND to FAF (DME 5 AND).
<b>SKAGEN FOUR VICTOR ARRIVAL (SKG 4V)</b>	From SKG proceed on R-026 SKG/R-205 AND. When passing DME 12 AND turn right to intercept and proceed on ARC DME 10 AND. When passing R-147 AND turn left to intercept and follow R-135 AND to FAF (DME 5 AND).
<b>TROMSØ FOUR VICTOR ARRIVAL (TRO 4V)</b>	From TRO proceed on R-244 TRO/R-061 AND. When passing DME 12 AND turn left to intercept and proceed on ARC DME 10 AND. When passing R-123 AND turn right to intercept and follow R-135 AND to FAF (DME 5 AND).